

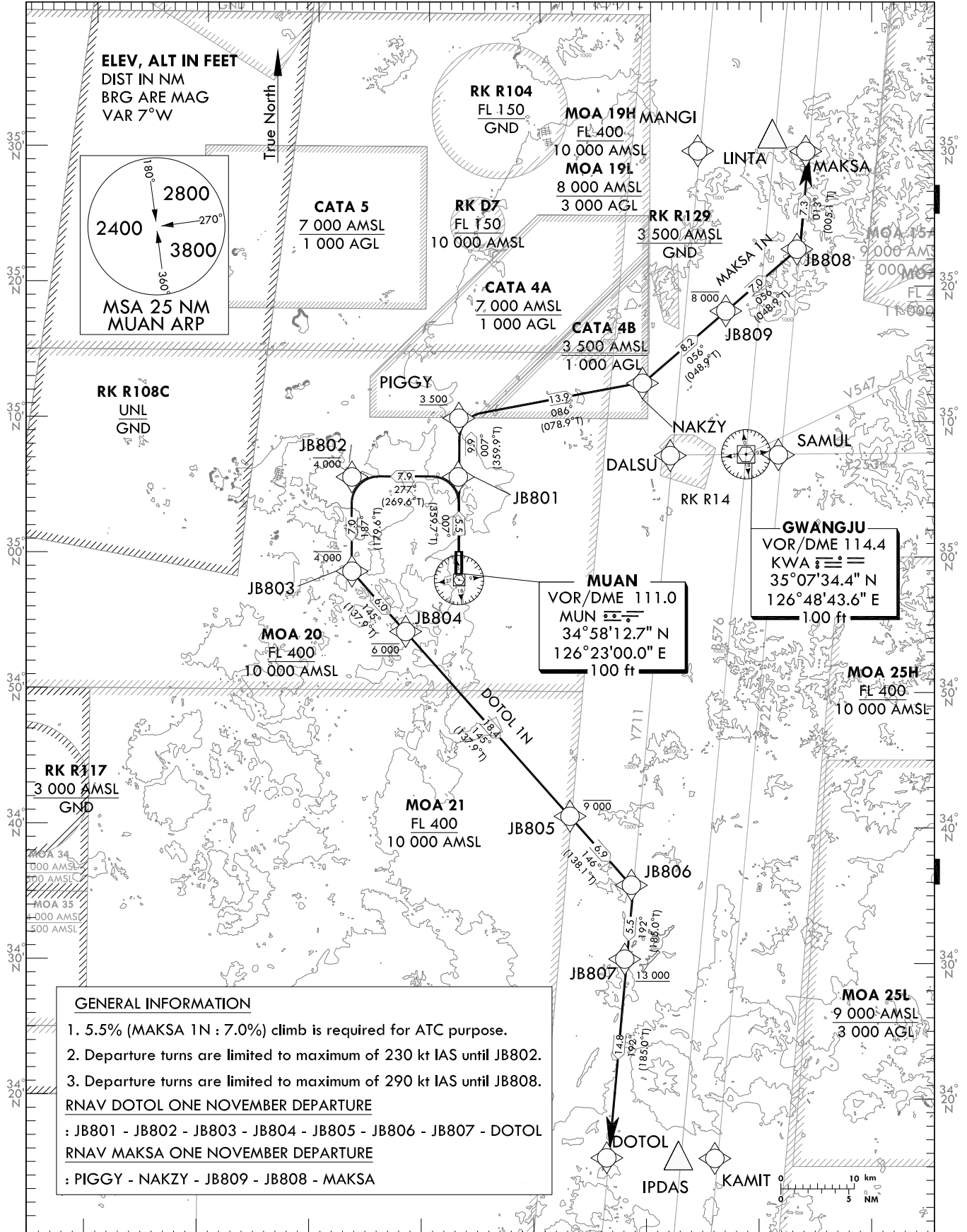
**STANDARD DEPARTURE CHART  
INSTRUMENT(SID) - ICAO**

TRANSITION ALT 14 000  
TRANSITION LVL FL 140

GWANGJU DEP	124.0
	347.2
MUAN TWR	118.25
	118.85

**MUAN/Muan Intl(RKJB)  
RWY 01  
RNAV MAKSA 1N  
RNAV DOTOL 1N**

Note : Departure under ICAO Flight Procedures.



**GENERAL INFORMATION**

- 5.5% (MAKSA 1N : 7.0%) climb is required for ATC purpose.
- Departure turns are limited to maximum of 230 kt IAS until JB802.
- Departure turns are limited to maximum of 290 kt IAS until JB808.

**RNAV DOTOL ONE NOVEMBER DEPARTURE**  
: JB801 - JB802 - JB803 - JB804 - JB805 - JB806 - JB807 - DOTOL

**RNAV MAKSA ONE NOVEMBER DEPARTURE**  
: PIGGY - NAKZY - JB809 - JB808 - MAKSA

**NOTE**

- RNAV 1 operation
- GNSS required
- ATS surveillance service required

Change : Radial information.

MUAN/Muan Intl(RKJB)  
RWY 01

RNAV MAKSA 1N, RNAV DOTOL 1N

AERONAUTICAL DATA TABULATION

Standard Instrument Departure Procedure Coding Tables

RNAV MAKSA 1N												
Serial Number	Path Descriptor	Waypoint Identifier	Fly-over	Course/Track °M(°T)	Distance (NM)	Turn direction	Altitude (ft)	Speed (kt)	Coordinates	VPA/TCH	Navigation specification	Remarks
001	CF	PIGGY	-	007(359.9)	9.9	-	+3 500	-290	351013.9N 1262256.6E	-	RNAV 1	-
002	TF	NAKZY	-	086(078.9)	13.9	-	-6 000	-290	351253.8N 1263934.6E	-	RNAV 1	-
003	TF	JB809	-	056(048.9)	8.2	-	-8 000	-290	351817.2N 1264706.8E	-	RNAV 1	-
004	TF	JB808	-	056(048.9)	7.0	-	-	-290	352253.4N 1265334.1E	-	RNAV 1	-
005	TF	MAKSA	-	013(005.1)	7.3	-	-	-	353011.3N 1265422.0E	-	RNAV 1	-

RNAV DOTOL 1N												
Serial Number	Path Descriptor	Waypoint Identifier	Fly-over	Course/Track °M(°T)	Distance (NM)	Turn direction	Altitude (ft)	Speed (kt)	Coordinates	VPA/TCH	Navigation specification	Remarks
001	CF	JB801	-	007(359.7)	5.5	-	-	-230	350551.5N 1262255.5E	-	RNAV 1	-
002	TF	JB802	-	277(269.6)	7.9	-	-4 000	-230	350548.2N 1261317.8E	-	RNAV 1	-
003	TF	JB803	-	187(179.6)	7.0	-	-4 000	-	345847.5N 1261321.8E	-	RNAV 1	-
004	TF	JB804	-	145(137.9)	6.0	-	@6 000	-	345420.0N 1261815.4E	-	RNAV 1	-
005	TF	JB805	-	145(137.9)	18.4	-	-9 000	-	344039.6N 1263310.9E	-	RNAV 1	-
006	TF	JB806	-	146(138.1)	6.9	-	-	-	343532.9N 1263843.9E	-	RNAV 1	-
007	TF	JB807	-	192(185.0)	5.5	-	+13 000	-	343002.7N 1263809.3E	-	RNAV 1	-
008	TF	DOTOL	-	192(185.0)	14.8	-	-	-	341515.4N 1263636.6E	-	RNAV 1	-

Change : Information of Course/Track.

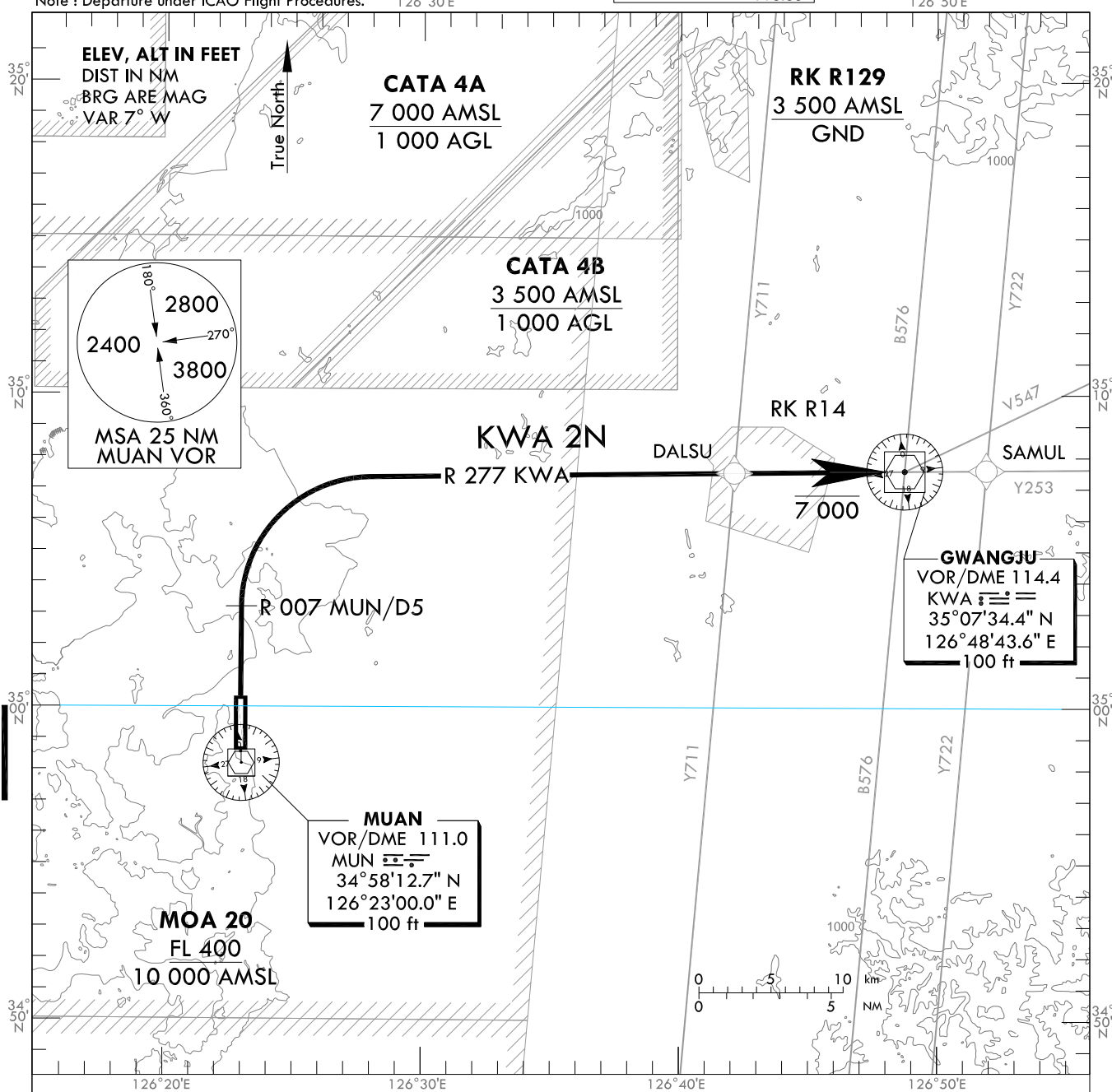
**STANDARD DEPARTURE CHART  
INSTRUMENT(SID) - ICAO**

TRANSITION ALT 14 000  
TRANSITION LVL FL 140

GWANGJU DEP	124.0
	347.2
MUAN TWR	118.25
	118.85

**MUAN/Muan Intl(RKJB)  
RWY 01  
KWA 2N**

Note : Departure under ICAO Flight Procedures.



**KWA TWO NOVEMBER DEPARTURE**

Climb on R 007 MUN. At R 007 MUN/D5, Turn Right to intercept R 277 KWA, Join B576 or V543 airway as assigned.

- \* Cross KWA at or below 7 000 ft unless otherwise directed by ATC.
- \* Minimum Climb gradient 5.6% until joining the assigned airway for ATC purpose.
- \* Departure turns are limited to maximum of 240 KIAS until KWA.

Change : OBST information.

**INTENTIONALLY**

**LEFT**

**BLANK**

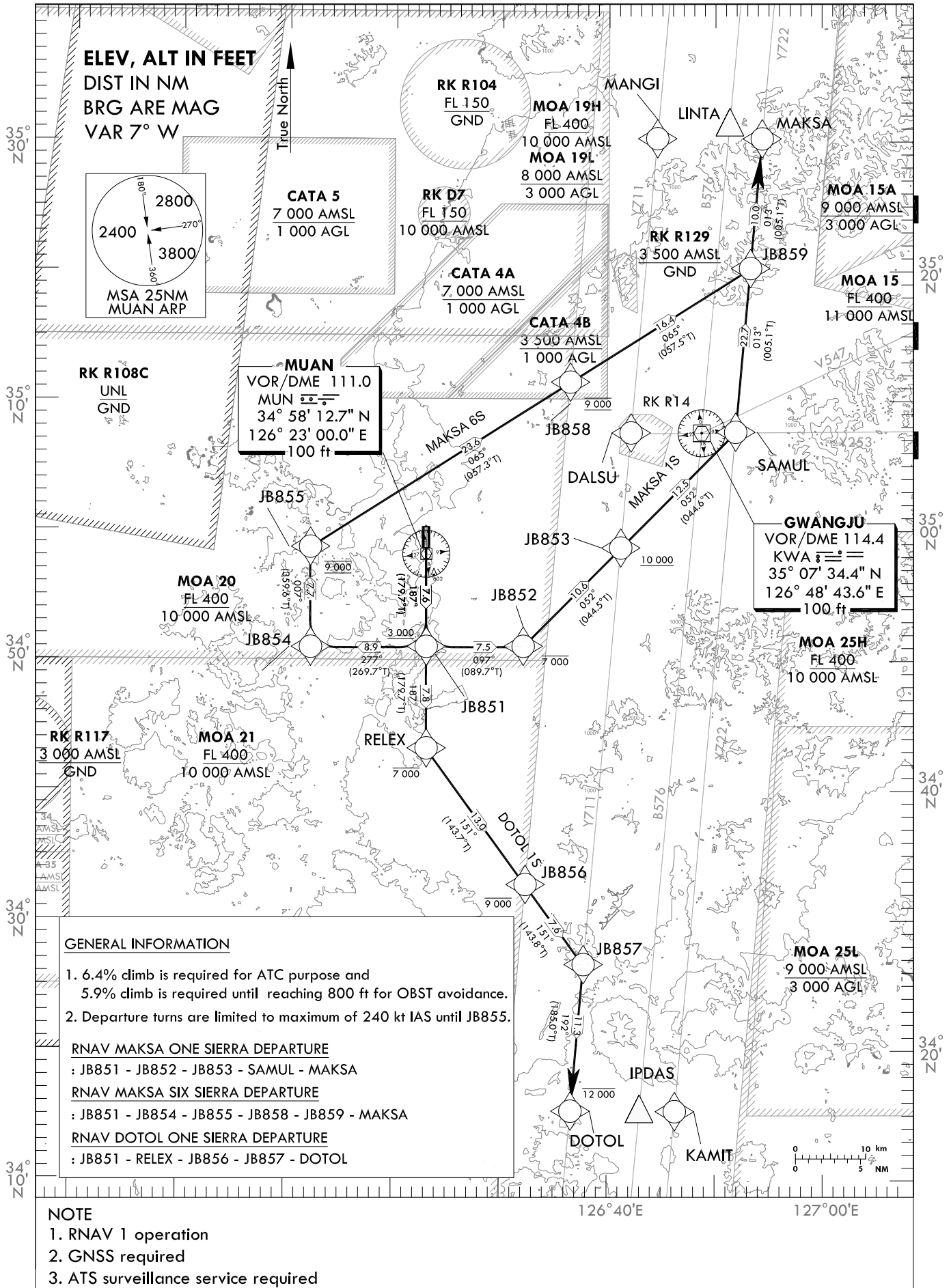
STANDARD DEPARTURE CHART  
INSTRUMENT(SID) - ICAO

TRANSITION ALT 14 000  
TRANSITION LVL FL 140

GWANGJU DEP 124.0  
347.2  
MUAN TWR 118.25  
118.85

MUAN/Muan Intl(RKJB)  
RWY 19  
RNAV MAKSA 1S  
RNAV MAKSA 6S  
RNAV DOTOL 1S

Note : Departure under ICAO Flight Procedures.



Change : Radial information.

MUAN/Muan Intl(RKJB)  
RWY 19  
RNAV MAKSA 1S, RNAV MAKSA 6S  
RNAV DOTOL 1S

AERONAUTICAL DATA TABULATION

Standard Instrument Departure Procedure Coding Tables

Serial Number	Path Descriptor	Waypoint Identifier	Fly-over	Course/Track °/M(T)	Distance (NM)	Turn direction	Altitude (ft)	Speed (kt)	Coordinates	VPA/RDH	Navigation specification	Remarks
001	CF	JB851	-	187(179.7)	7.6	-	+3 000	-240	345100.9N 1262301.4E	-	RNAV 1	-
002	TF	JB852	-	097(089.7)	7.5	-	-7 000	-	345103.2N 1263204.9E	-	RNAV 1	-
003	TF	JB853	-	052(044.5)	10.6	-	+10 000	-	345839.3N 1264110.0E	-	RNAV 1	-
004	TF	SAMUL	-	052(044.6)	12.5	-	-	-	350735.5N 1265154.4E	-	RNAV 1	-
005	TF	MAKSA	-	013(005.1)	22.7	-	-	-	353011.3N 1265422.0E	-	RNAV 1	-

Serial Number	Path Descriptor	Waypoint Identifier	Fly-over	Course/Track °/M(T)	Distance (NM)	Turn direction	Altitude (ft)	Speed (kt)	Coordinates	VPA/RDH	Navigation specification	Remarks
001	CF	JB851	-	187(179.7)	7.6	-	+3 000	-240	345100.9N 1262301.4E	-	RNAV 1	-
002	TF	JB854	-	277(269.7)	8.9	-	-	-240	345057.7N 1261212.6E	-	RNAV 1	-
003	TF	JB855	-	007(359.6)	7.7	-	@ 9 000	-240	345840.4N 1261208.7E	-	RNAV 1	-
004	TF	JB858	-	065(057.3)	23.6	-	@ 9 000	-	351125.3N 1263624.2E	-	RNAV 1	-
005	TF	JB859	-	065(057.5)	16.4	-	-	-	352012.1N 1265316.5E	-	RNAV 1	-
006	TF	MAKSA	-	013(005.1)	10.0	-	-	-	353011.3N 1265422.0E	-	RNAV 1	-

Serial Number	Path Descriptor	Waypoint Identifier	Fly-over	Course/Track °/M(T)	Distance (NM)	Turn direction	Altitude (ft)	Speed (kt)	Coordinates	VPA/RDH	Navigation specification	Remarks
001	CF	JB851	-	187(179.7)	7.6	-	+3 000	-	345100.9N 1262301.4E	-	RNAV 1	-
002	TF	RELEX	-	187(179.7)	7.8	-	-7 000	-	344311.2N 1262304.3E	-	RNAV 1	-
003	TF	JB856	-	151(143.7)	13.0	-	-9 000	-	343242.2N 1263221.6E	-	RNAV 1	-
004	TF	JB857	-	151(143.8)	7.6	-	-	-	342633.0N 1263747.3E	-	RNAV 1	-
005	TF	DOTOL	-	192(185.0)	11.3	-	-12 000	-	341515.4N 1263636.6E	-	RNAV 1	-

Change : Information of Course/Track.

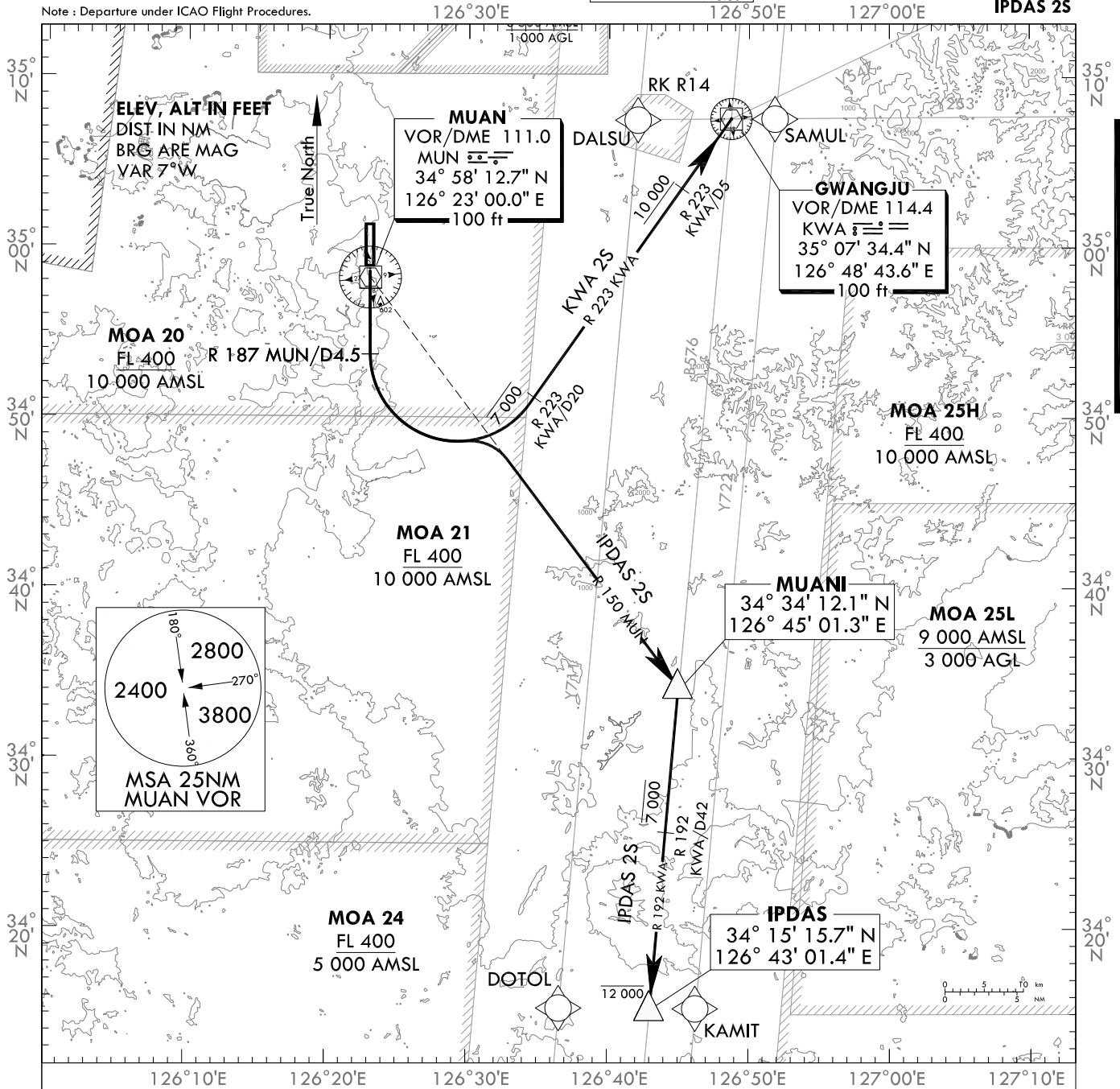
STANDARD DEPARTURE CHART  
INSTRUMENT(SID) - ICAO

TRANSITION ALT 14 000  
TRANSITION LVL FL 140

GWANGJU DEP	124.0
	347.2
MUAN TWR	118.25
	118.85

MUAN/Muan Intl(RKJB)  
RWY 19  
KWA 2S  
IPDAS 2S

Note : Departure under ICAO Flight Procedures.



KWA TWO SIERRA DEPARTURE

Climb on R 187 MUN. At R 187 MUN/D4.5, Turn Left to intercept R 223 KWA, Join B576 or V543 airway as assigned.  
\* Minimum 5.9% Climb is required until reaching 800 ft for OBST avoidance and 10 000 ft for ATC purpose.  
\* Cross R 223 KWA/D20 at or below 7 000 ft and at or above 10 000 ft until R 223 KWA/D5 unless otherwise directed by ATC.

IPDAS TWO SIERRA DEPARTURE

Climb on R 187 MUN. At R 187 MUN/D4.5, Turn Left to intercept R 150 MUN to MUANI then IPDAS, Join B576 airway as assigned.  
\* Minimum 5.9% Climb is required until reaching 800 ft for OBST avoidance.  
\* Cross R 192 KWA/D42 at or below 7 000 ft and at or below 12 000 ft until IPDAS unless otherwise directed by ATC.

Change : Radial information.

**INTENTIONALLY**

**LEFT**

**BLANK**